

DESCRIPTION: INLINE QUICK BREAK-AWAY VALVE - HIGH FLOW.

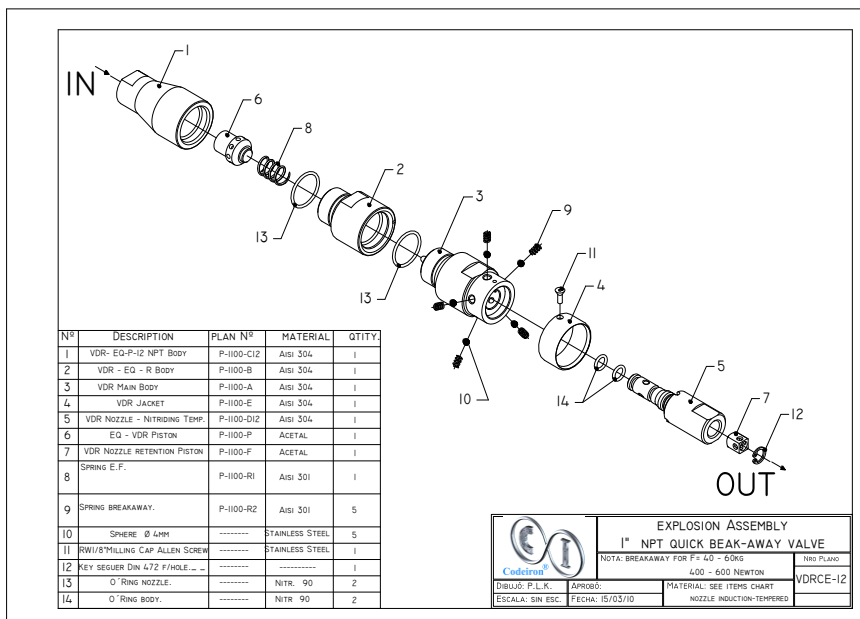
TRADE MARK: CODEIRON.
ORIGIN: MADE IN ARGENTINA.
MODEL: CI-1100-16-SS.
STANDARD: NAG 441-2.

CONSTRUCTION MATERIALS:

BODY: STAINLESS STEEL AISI 316.

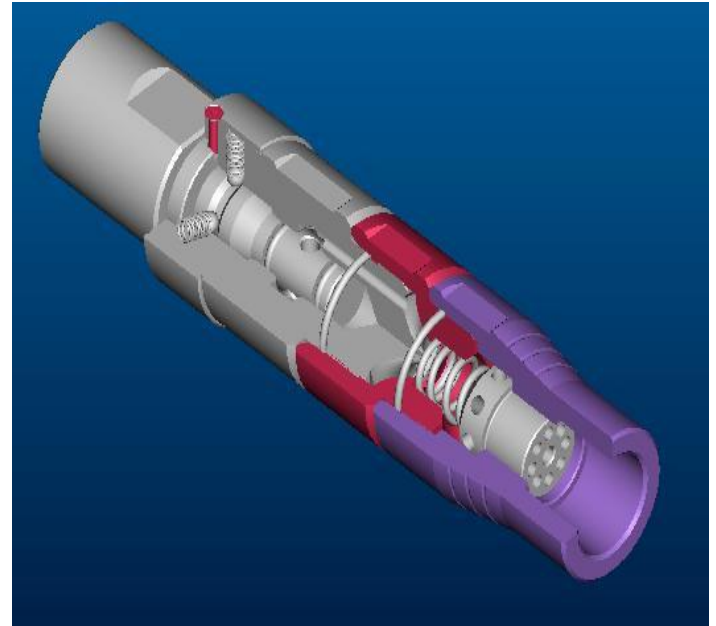
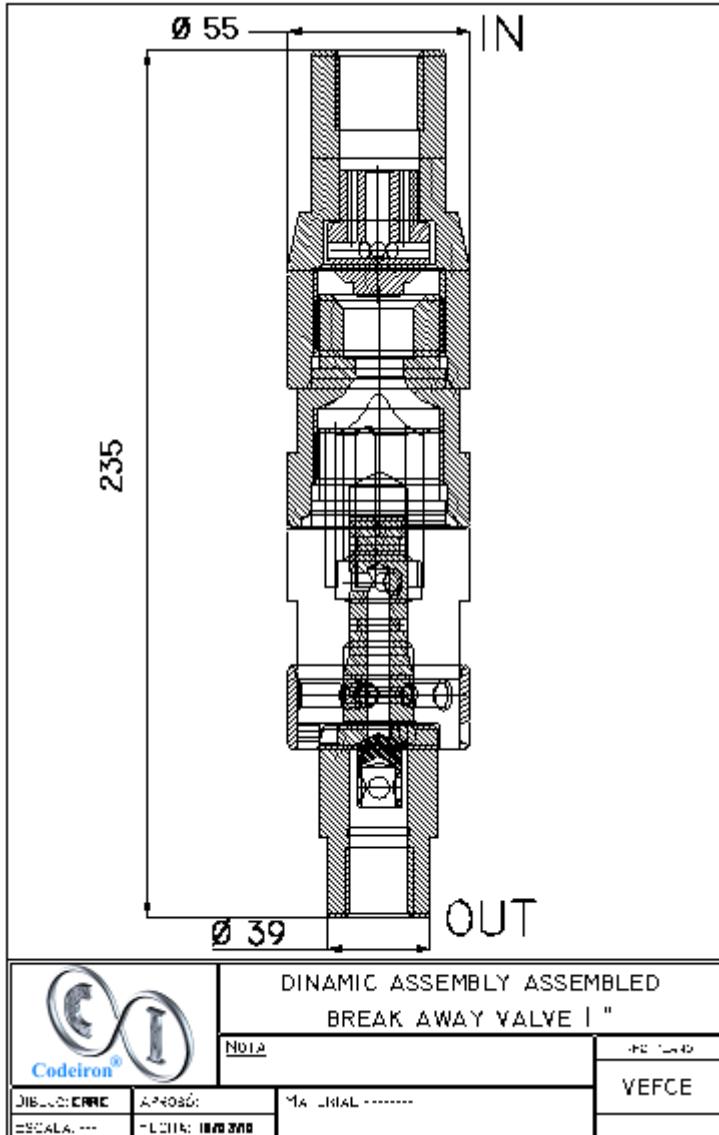
TECHNICAL FEATURES:

DRIVE: QUICK BREAK-AWAY BY TRACTION.
A. FORCE > 50 - 70 KG (500 – 700 NEW).
PASSAGE: Ø 19 MM.
CONNECTION: 1" NPTH.
NOMINAL PRESSURE: 250 BAR.
MAXIMUM PRESSURE: 300 BAR.
VOLUME OF FLOW: CV=2
WORKING TEMPERATURE: -40° C / 90° C.
ASSEMBLY POSITION: VERTICAL / HORIZONTAL.
MEASURES: (Ø 55 x L 235) MM.
GROSS WEIGHT: 2.8 KG.
APPLICATION: NATURAL GAS VEHICULAR (N.G.V.); **FLUID:** DRY NATURAL GAS.



TECHNICAL DATA

DIMENSIONS:



WARNING:

SET CODEIRON™ INLINE BREAKAWAY VALVE WITH A FLEXIBLE OF AT LEAST 300 MM LONG LOCATED AT THE VALVE INLET , SO IT CAN PIVOT WHEN IT IS APPLIED A TRACTION POWER AND THE PULLING FORCE RESULTS IN THE SAME DIRECTION AS THE LONGITUDINAL AXIS OF THE VALVE.