

## NGV SOLENOID VALVE 2 WAYS



**Model: CI – 1220 – 6 – SS**

Brand: CODEIRON

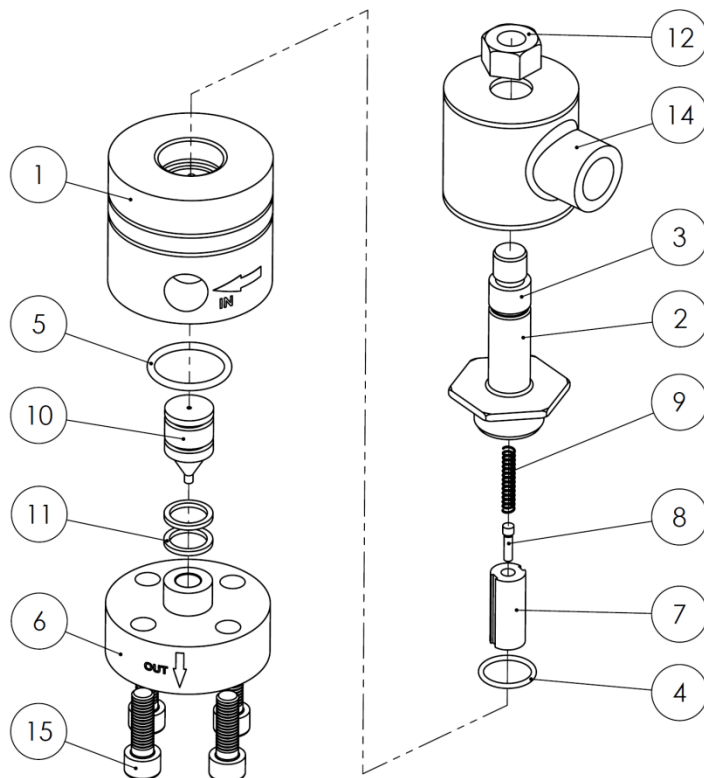
Origin: Argentinian industry

Norm: GE N1-441

## TECHNICAL FEATURES

|                     |                                   |
|---------------------|-----------------------------------|
| Work pressure       | Nominal 200 BAR.<br>Max. 300 BAR. |
| Working temperature | -10°C / 90°C                      |
| Standard Connection | 3/8" NPT                          |
| Passage             | 9mm                               |
| Drive               | 2 ways by piston                  |
| Capacity            | 900 m <sup>3</sup> /h             |
| Position            | Vertical with coil upwards        |
| Measures            | 59 x 59x134 cm                    |
| Gross Weight        | 1,9 Kg                            |
| Application         | Natural Gas<br>vehicular          |
| Fluid               | Dry natural Gas                   |

## EXPLOSION ASSEMBLY



| Nr. | Qty | Description                | Material          |
|-----|-----|----------------------------|-------------------|
| 1   | 1   | CUERPO                     | AISI 304          |
| 2   | 1   | TAPA NO MAGNETICO          | AISI 304          |
| 3   | 1   | PERNO MAGNETICO            | SAE 1010 RECOCIDO |
| 4   | 1   | O-RING 2-017               | NITRILO 90        |
| 5   | 1   | O-RING 2-120               | NITRILO 90        |
| 6   | 1   | BRIDA                      | AISI 304          |
| 7   | 1   | PISTON PILOTO              | SAE 1010 RECOCIDO |
| 8   | 1   | AGUJA PILOTO               | AISI 304          |
| 9   | 1   | RESORTE                    | AISI 302          |
| 10  | 1   | PISTON PLASTICO            | ACETAL            |
| 11  | 2   | ARO PISTON PLASTICO        | ACETAL            |
| 12  | 1   | TUERCA SUPERIOR            | AISI 304 O LATON  |
| 13  | 1   | ESPIRA COBRE ELECTROLITICO |                   |
| 14  | 1   | BOBINA CON CAPUCHON        | SAE 1212          |
| 15  | 4   | ISO 4762 M8 x 25mm         |                   |