

## NGV SOLENOID VALVE 2 WAYS

### TECHNICAL FEATURES



Work pressure	Nominal 250 BAR. Max. 300 BAR.
Working temperature	-20°C / 90°C
Standard Connection	1/2 NPT
Passage	12 mm
Drive	2 ways by piston
Capacity	CV= 1.8
Position	Vertical with coil upwards
Measures	(Ø 59 x L 134) mm
Gross Weight	1,9 Kg
Tension	220 VAC - 0,11 amp.
Fluid	Dry natural Gas

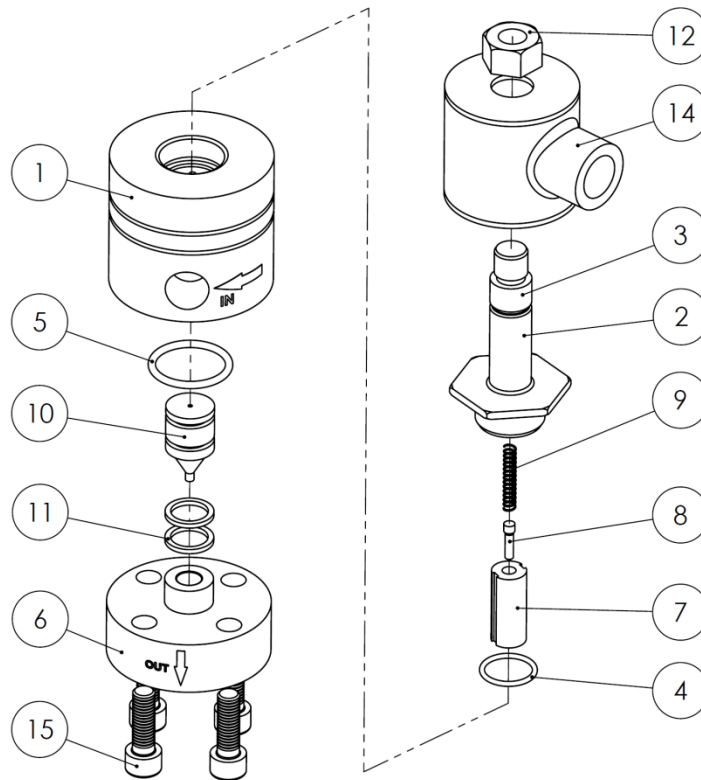
**Model: CI – 1220 – 8 – SS**

Brand: CODEIRON

Origin: Argentinian industry

Norm: GE N1-441

## EXPLOSION ASSEMBLY



Nr.	Qty	Description	Material
1	1	CUERPO	AISI 304
2	1	TAPA NO MAGNETICO	AISI 304
3	1	PERNO MAGNETICO	SAE 1010 RECOCIDO
4	1	O-RING 2-017	NITRILO 90
5	1	O-RING 2-120	NITRILO 90
6	1	BRIDA	AISI 304
7	1	PISTON PILOTO	SAE 1010 RECOCIDO
8	1	AGUJA PILOTO	AISI 304
9	1	RESORTE	AISI 302
10	1	PISTON PLASTICO	ACETAL
11	2	ARO PISTON PLASTICO	ACETAL
12	1	TUERCA SUPERIOR	AISI 304 O LATON
13	1	ESPIRA COBRE ELECTROLITICO	
14	1	BOBINA CON CAPUCHON	SAE 1212
15	4	ISO 4762 M8 x 25mm	