

DESCRIPTION: INLINE QUICK BREAK-AWAY VALVE - HIGH FLOW.

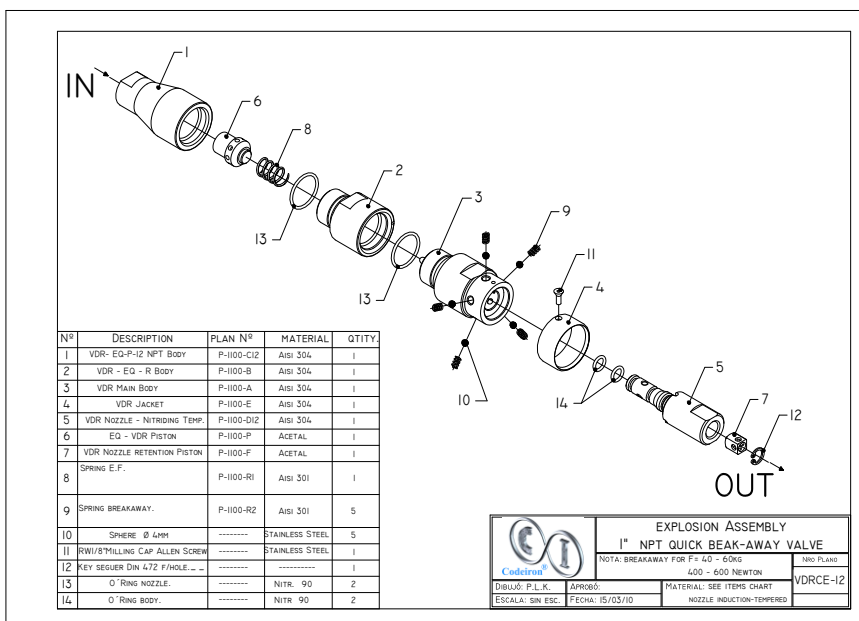
TRADE MARK: CODEIRON.
ORIGIN: MADE IN ARGENTINA.
MODEL: CI-1100-8-SS.
STANDARD: NAG 441-2.

CONSTRUCTION MATERIALS:

BODY: STAINLESS STEEL AISI 304.

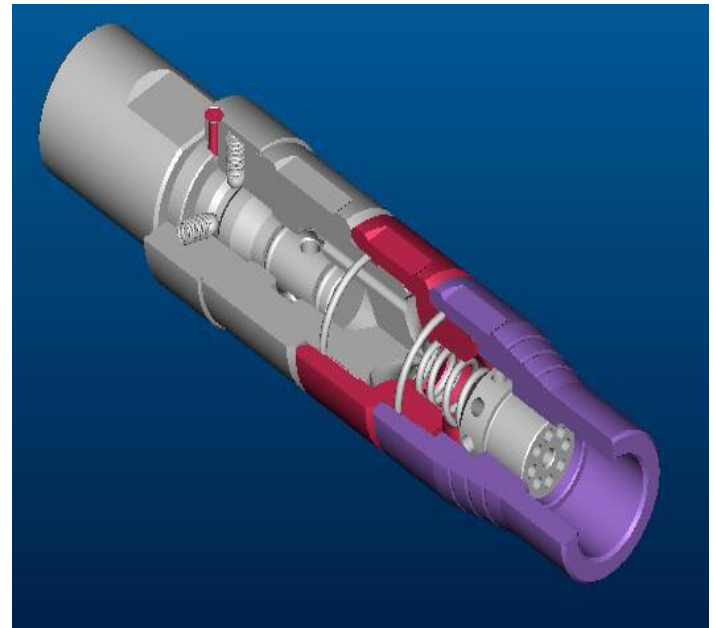
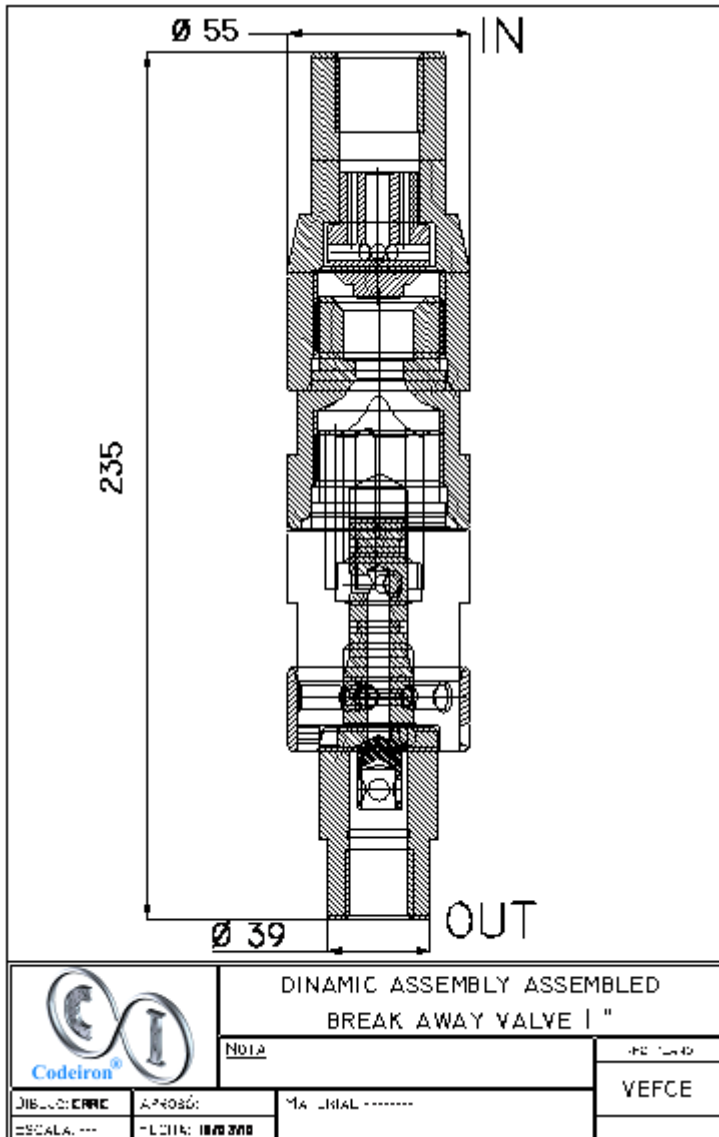
TECHNICAL FEATURES:

DRIVE: QUICK BREAK-AWAY BY TRACTION.
A F > 50 - 70 KG (500 - 700 NEW).
PASSAGE: Ø 18 MM.
CONNECTION: 1/2 NPTH.
NOMINAL PRESSURE: 250 BAR.
MAXIMUM PRESSURE: 300 BAR.
VOLUME OF FLOW: 1.800 M³ / H.
WORKING TEMPERATURE: -40° C / 90° C.
ASSEMBLY POSITION: VERTICAL / HORIZONTAL.
MEASURES: 55 x 55 x 235 MM.
GROSS WEIGHT: 2.75 KG.
APPLICATION: NATURAL GAS VEHICULAR (N.G.V.); **FLUID:** DRY NATURAL GAS.



TECHNICAL DATA

DIMENSIONS:



WARNING:

SET CODEIRON™ INLINE BREAKAWAY VALVE WITH A FLEXIBLE OF AT LEAST 300 MM LONG LOCATED AT THE VALVE INLET , SO IT CAN PIVOT WHEN IT IS APPLIED A TRACTION POWER AND THE PULLING FORCE RESULTS IN THE SAME DIRECTION AS THE LONGITUDINAL AXIS OF THE VALVE.